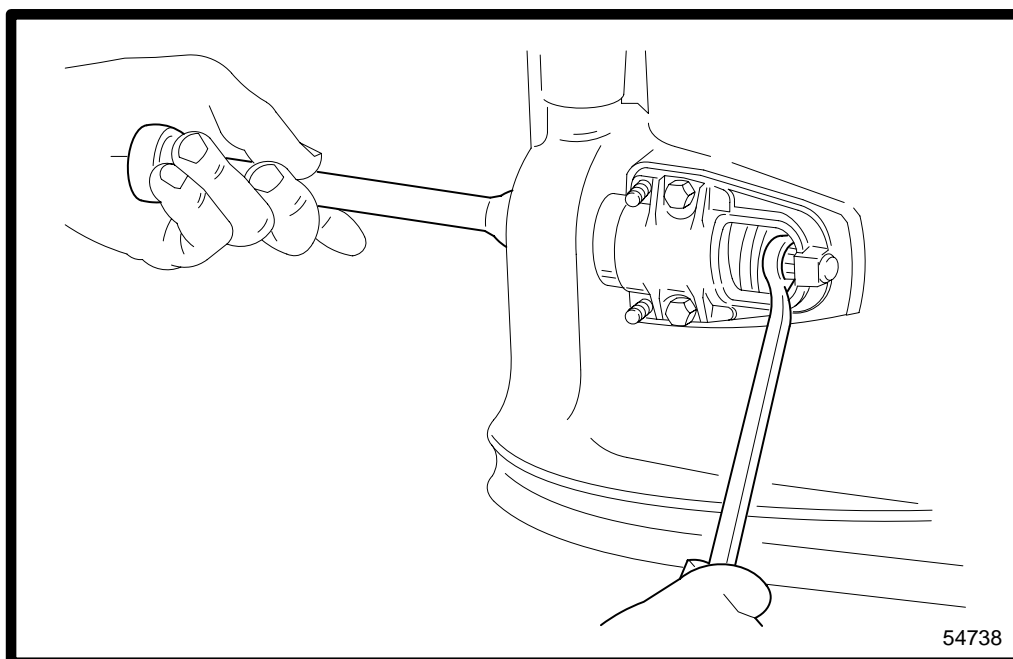




# MID-SECTION



5

A

**CLAMP/SWIVEL BRACKET AND  
DRIVE SHAFT HOUSING**



# Table of Contents

	Page
Swivel Bracket Components .....	5A-1
Torque Specifications .....	5A-1
Quicksilver Lubricants and Service	
Aids .....	5A-1
Transom Bracket Components .....	5A-2
Torque Specifications .....	5A-2
Quicksilver Lubricants and Service	
Aids .....	5A-2
Drive Shaft Housing Components .....	5A-3
Torque Specifications .....	5A-3
Quicksilver Lubricants and Service	
Aids .....	5A-3
Disassembly .....	5A-4
Reassembly .....	5A-4
Tilt Lock Lever/Transom Bracket .....	5A-4
Drive Shaft Housing .....	5A-6



- ## Torque Specifications

- a** 20 lb. ft. (27 N·m)
- b** 40 lb. ft. (54.2 N·m)
- c** Torque until it seats, then back off 1/4 turn.

## Quicksilver Lubricants and Service Aids



\*See Quicksilver Accessories Guide for part number.





# Transom Bracket Components

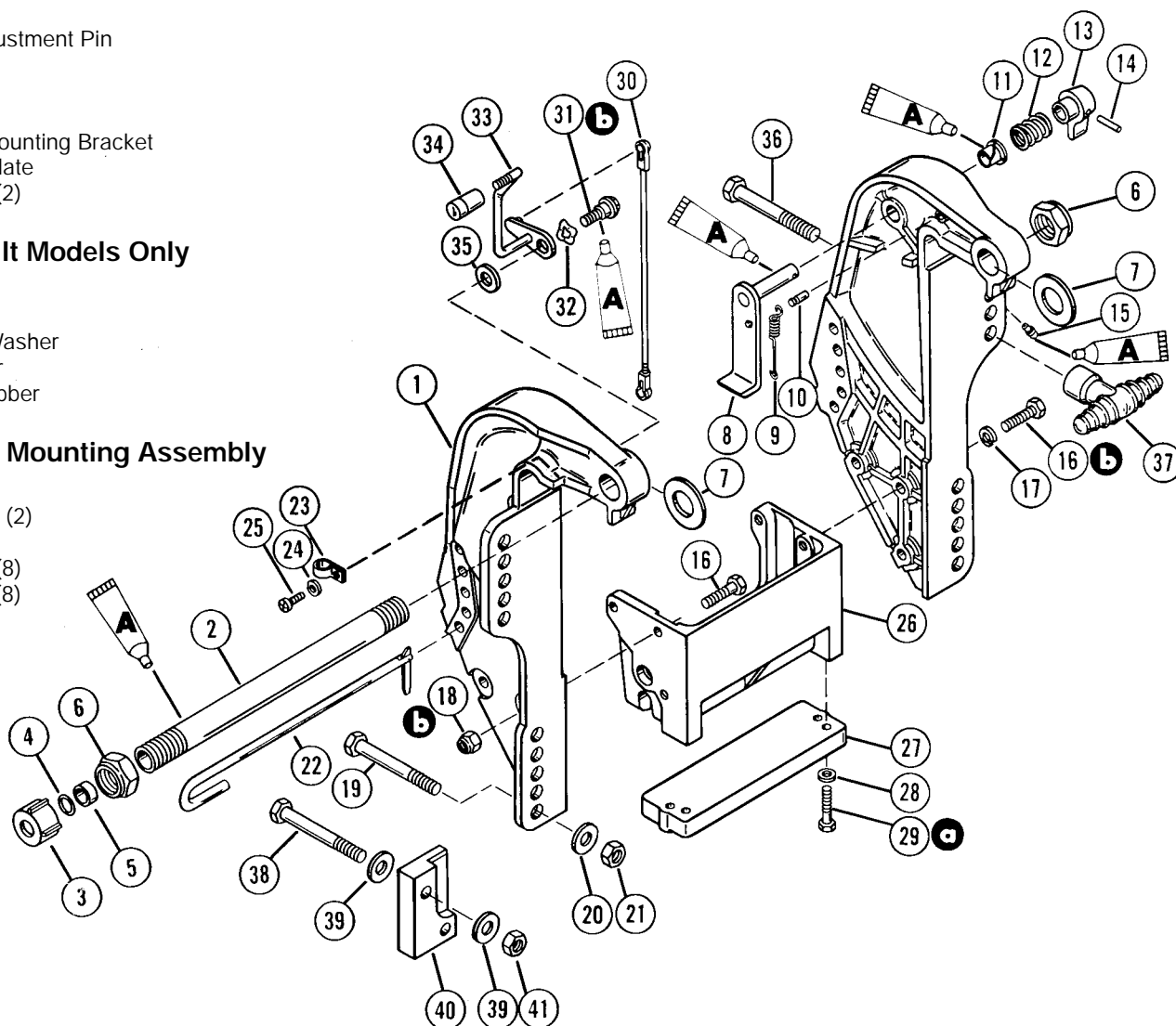
- 1 - Transom Bracket (2)
- 2 - Tilt Tube
- 3 - Cap, Nylon
- 4 - O-ring
- 5 - Spacer
- 6 - Lock Nut (2)
- 7 - Washer (2)
- 8 - Tilt Lock Lever
- 9 - Spring
- 10 - Pin
- 11 - Bushing
- 12 - Spring
- 13 - Lever
- 14 - Roll Pin
- 15 - Grease Fitting
- 16 - Bolt (6)
- 17 - Lock Washer (4)
- 18 - Lock Nut (2)
- 19 - Bolt (4)
- 20 - Washer (4)
- 21 - Nut (4)
- 22 - Trim Adjustment Pin
- 23 - Clamp
- 24 - Washer
- 25 - Bolt
- 26 - Lower Mounting Bracket
- 27 - Anode Plate
- 28 - Washer (2)
- 29 - Bolt (2)

## Manual Tilt Models Only

- 30 - Link
- 31 - Bolt
- 32 - Spring Washer
- 33 - Tilt Lever
- 34 - Grip, Rubber
- 35 - Washer

## Outboard Mounting Assembly

- 36 - Bolt (2)
- 37 - T-handle (2)
- 38 - Bolt (4)
- 39 - Washer (8)
- 40 - Bracket (8)
- 41 - Nut (4)



## Torque Specifications

**a** 60 lb. in. (6.8 N·m)

**b** 25 lb. ft. (33.9 N·m)

## Quicksilver Lubricants and Service Aids

 **A** 2-4-C Marine Lubricant\*

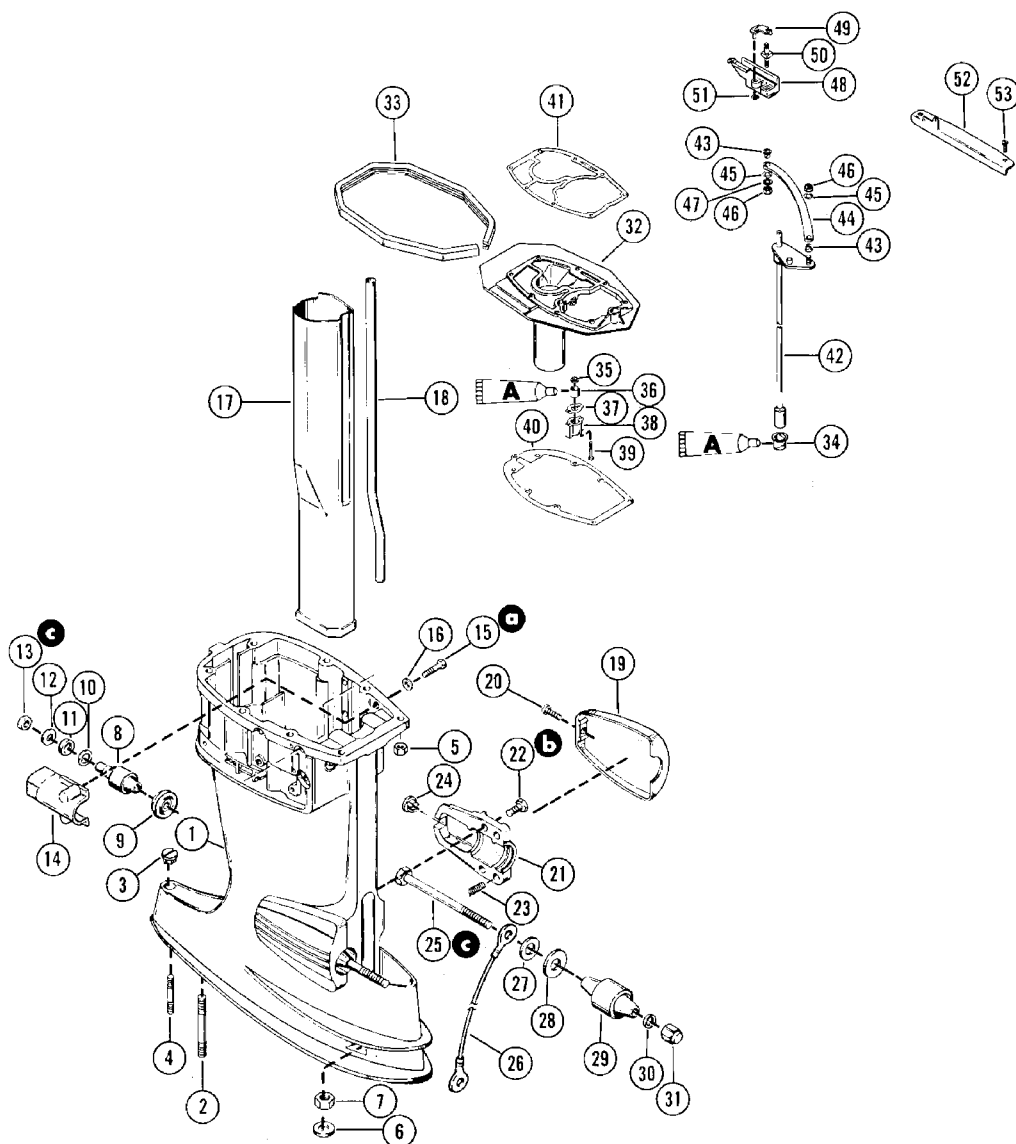
\*See Quicksilver Accessories Guide for part number.

50373



# Drive Shaft Housing Components

- 1 - Drive Shaft Housing
- 2 - Stud
- 3 - Plug
- 4 - Stud
- 5 - Nut (8)
- 6 - Washer (2)
- 7 - Nut (2)
- 8 - Mount, Rubber - Upper (2)
- 9 - Seal, Upper Mount (2)
- 10 - Washer (2)
- 11 - Washer, Rubber (2)
- 12 - Washer (2)
- 13 - Nut (2)
- 14 - Cover, Upper Mount (2)
- 15 - Screw (4)
- 16 - Washer (4)
- 17 - Tube, Exhaust
- 18 - Tube, Water Inlet
- 19 - Cover, Lower Mount Clamp
- 20 - Screw (2)
- 21 - Clamp, Lower Mount (2)
- 22 - Screw (4)
- 23 - Spring, Tension (4)
- 24 - Nut (2)
- 25 - Screw (2)
- 26 - Ground Wire
- 27 - Washer (2)
- 28 - Washer, Rubber (2)
- 29 - Mount, Rubber - Lower (2)
- 30 - Washer (2)
- 31 - Nut (2)
- 32 - Exhaust Adaptor Plate
- 33 - Seal
- 34 - Bushing
- 35 - Washer, Nylon
- 36 - Seal, Rubber
- 37 - Gasket
- 38 - Housing
- 39 - Screw (2)
- 40 - Gasket
- 41 - Gasket
- 42 - Shift Shaft Lever
- 43 - Bushing (2)
- 44 - Shift Link
- 45 - Wave Washer (2)
- 46 - Nut (2)
- 47 - Washer (2)
- 48 - Slider
- 49 - Retainer
- 50 - Stud
- 51 - Retaining Ring
- 52 - Retainer
- 53 - Screw (2)



## Torque Specifications

- a** 80 lb. in. (9.0 N·m)
- b** 150 lb. in. (17 N·m)
- c** 40 lb. ft. (54.2 N·m)

## Quicksilver Lubricants and Service Aids

 **A** 2-4-C Marine Lubricant\*

\*See Quicksilver Accessories Guide for part number.



## Disassembly

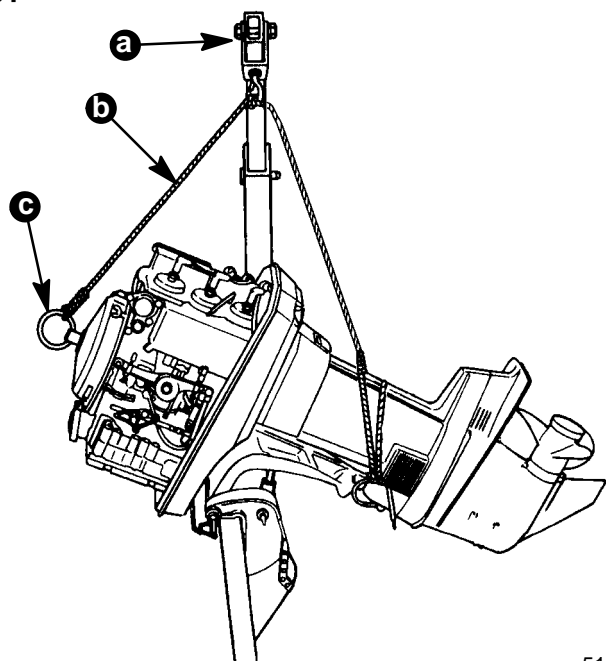
1. Remove shock system assembly (refer to Section 5D) from non power trim models.
2. Remove power trim assembly (refer to Section 5 B or 5C) from power trim models.

**NOTE:** Servicing components such as steering arm, driveshaft housing, exhaust assembly etc. generally require powerhead and/or gear housing removal. Refer to appropriate section in service manual. Components such as swivel bracket, transom bracket, lower mount bracket, tilt tube and lower engine mounts can be serviced without powerhead/gear housing removal; however, outboard must be supported (shown) before servicing components not requiring powerhead/gear housing removal.

### ⚠ WARNING

Failure to support outboard as shown could result in personal injury and/or damage to outboard or boat.

#### Typical Outboard Shown



51078

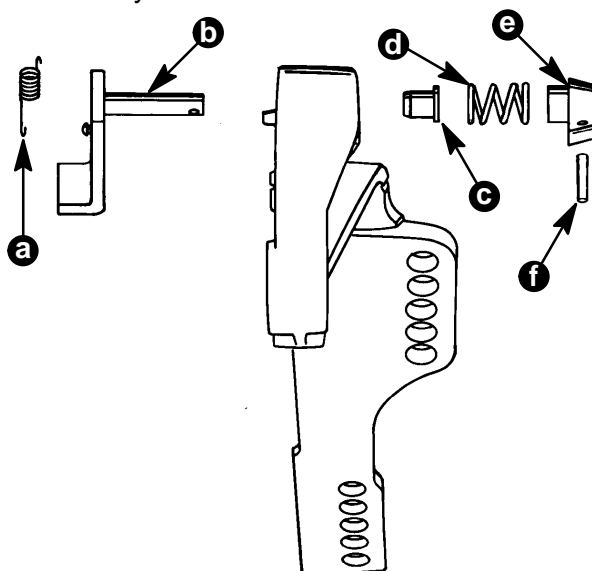
- a - Hoist
- b - Rope
- c - Lifting Eye (P/N 91-90455)

**NOTE:** Refer to parts views on pages 1, 2 and 3 and disassemble mid-section components as required.

## Reassembly

### Tilt Lock Lever/Transom Bracket

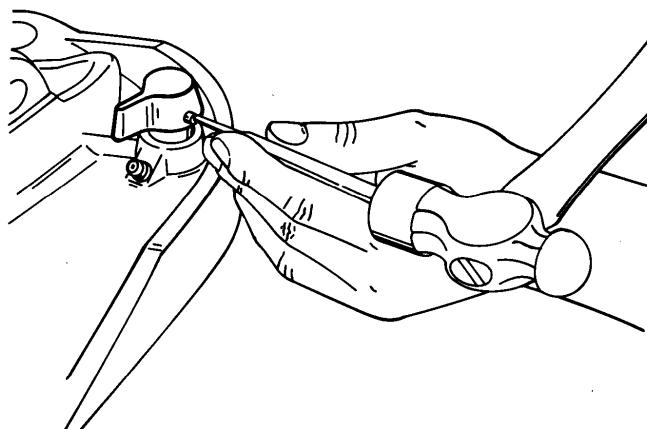
1. Apply Quicksilver 2-4-C Marine Lubricant to tilt lock lever shank, spacer and bushing prior to re-assembly.



51079

- a - Spring
- b - Tilt Lock Lever
- c - Bushing
- d - Spring
- e - Lever
- f - Roll Pin

2. Install roll pin to tilt lock lever assembly using appropriate punch.



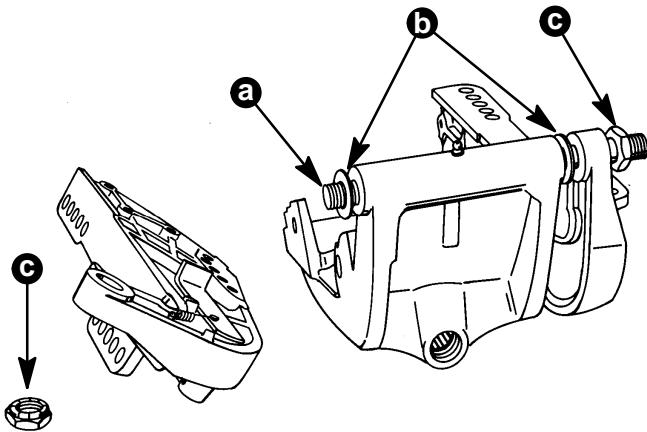
51078

### ⚠ CAUTION

When reinstalling outboard tilt tube, longer threaded end of tilt tube must extend approximately 3/4 in. (19mm) toward steering cable "nut" side of boat.



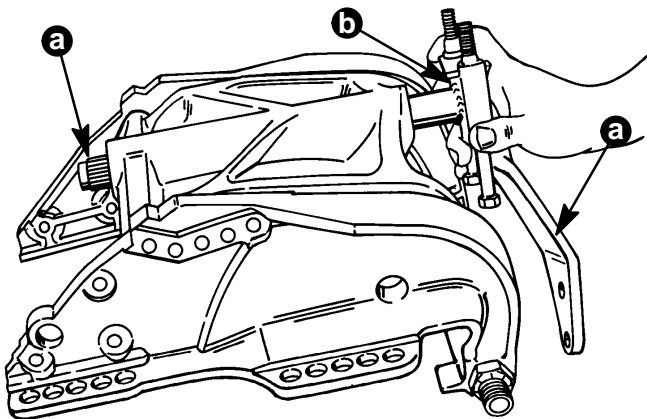
3. Lubricate outboard tilt tube using Quicksilver 2-4-C Marine Lubricant and install into swivel bracket.
4. Secure transom brackets into place using fiber washers and lock nuts.



51078

- a - Tilt Tube  
b - Fiber Washer  
c - Lock Nuts

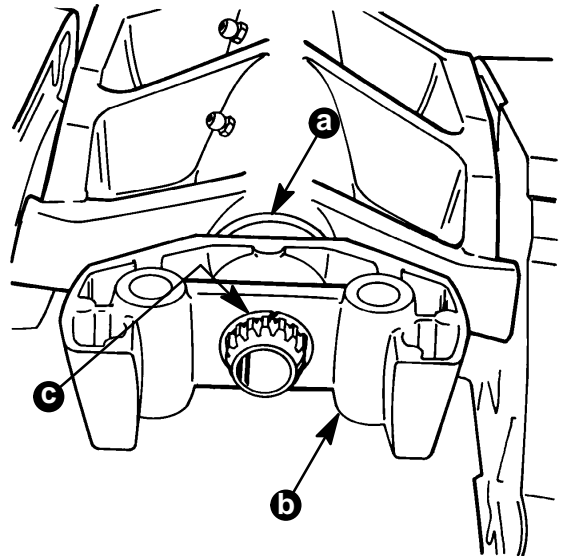
5. Apply Quicksilver 2-4-C Marine Lubricant to steering arm shaft and install.



51079

- a - Steering Arm  
b - Washer

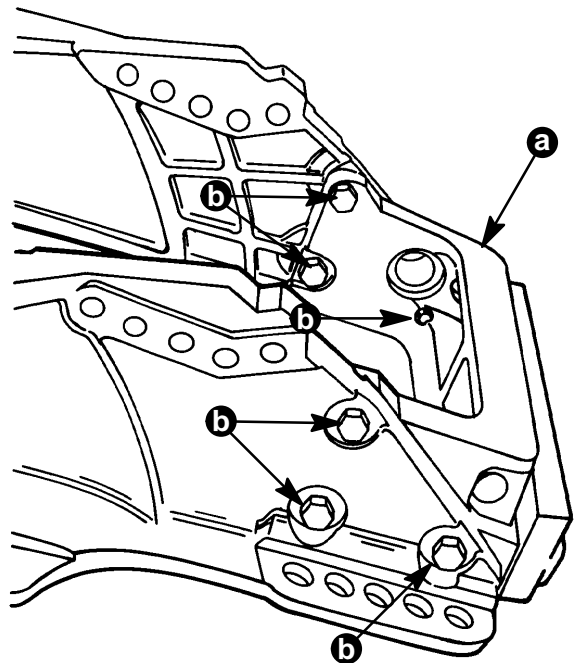
6. Install and secure yoke and washer using snap ring.



51079

- a - Washer  
b - Yoke  
c - Snap Ring

7. Install lower mounting bracket to transom brackets.



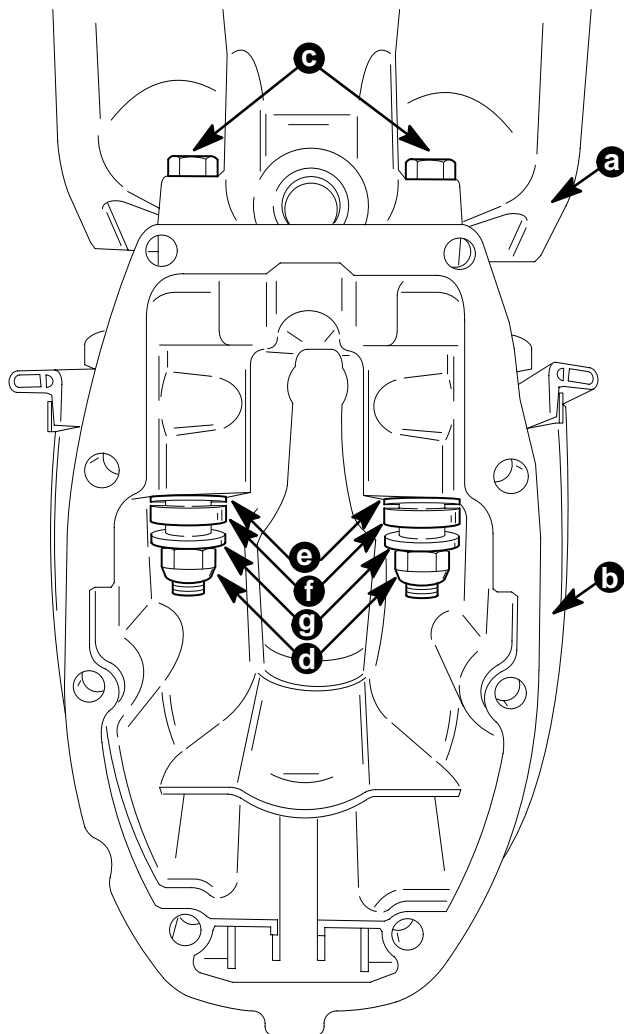
51079

- a - Lower Mounting Bracket  
b - Bolt



## Drive Shaft Housing

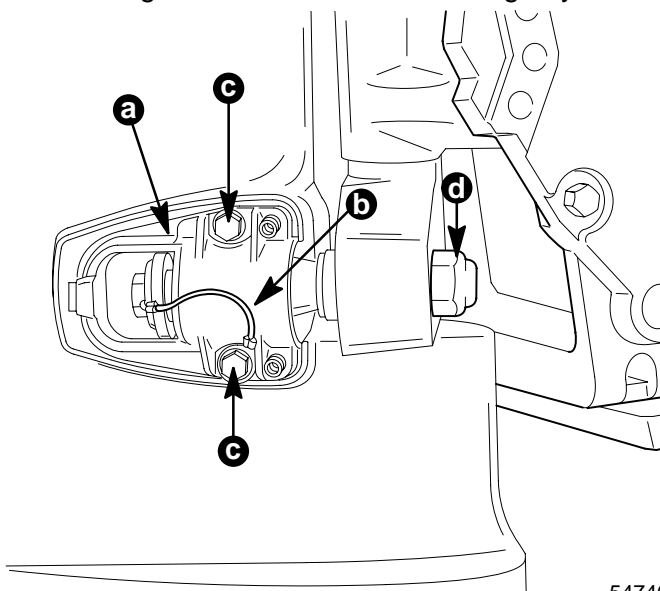
1. Secure transom bracket assembly to transom.
2. Install drive shaft housing to transom bracket assembly. Secure using bolts and components as shown.



54739

- a - Transom Bracket Assembly
- b - Drive Shaft Housing
- c - Bolts
- d - Lock Nuts [Torque to 40 lb. ft. (54.2 N·m)]
- e - Washer
- f - Rubber Mount
- g - Washer

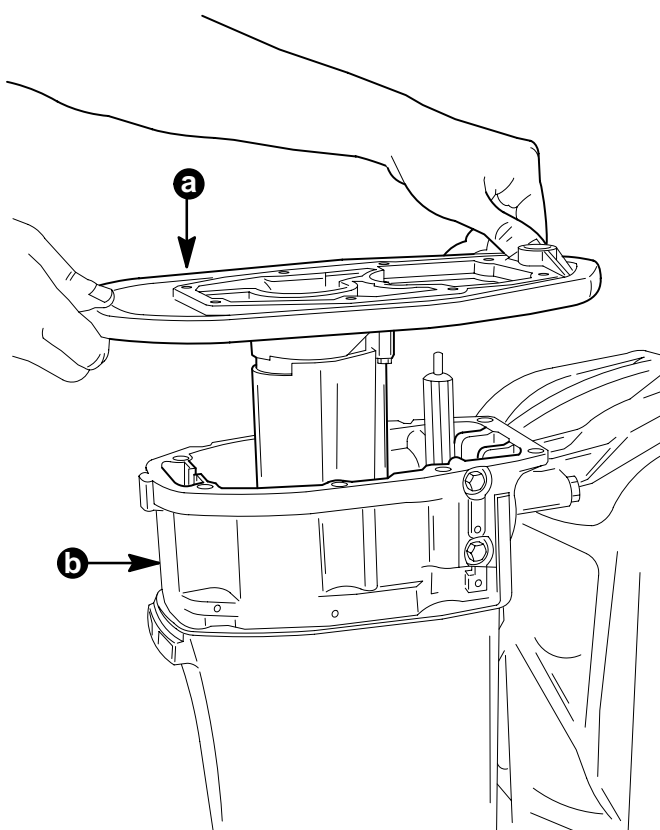
3. Secure lower mount assembly to drive shaft housing. Secure drive shaft housing to yoke.



54740

- a - Lower Mount Assembly
- b - Ground Cable
- c - Bolt [Torque to 150 lb. in. (17 N·m)]
- d - Lock Nut [Torque to 60 lb. ft. (81.3 N·m)]

4. Install exhaust plate assembly to drive shaft housing using new exhaust plate gasket.



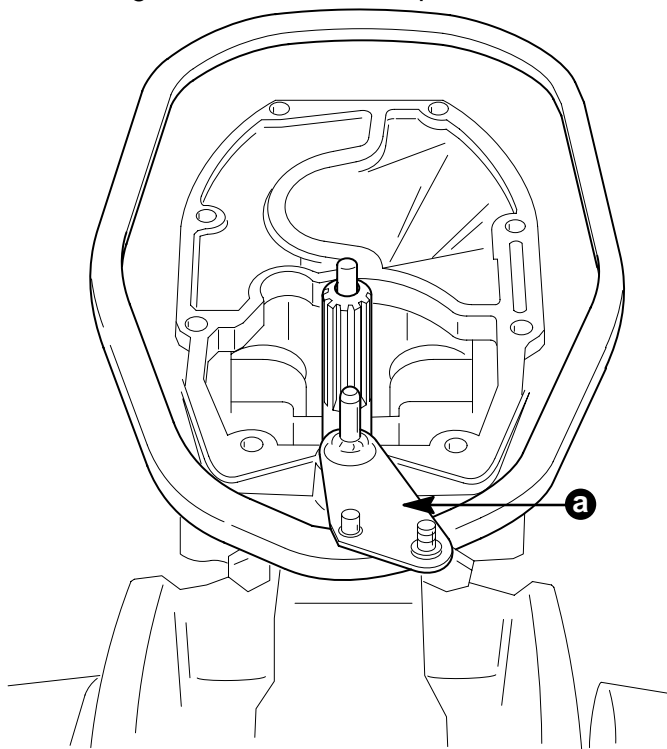
54741

- a - Exhaust Plate Assembly
- b - Drive Shaft Housing





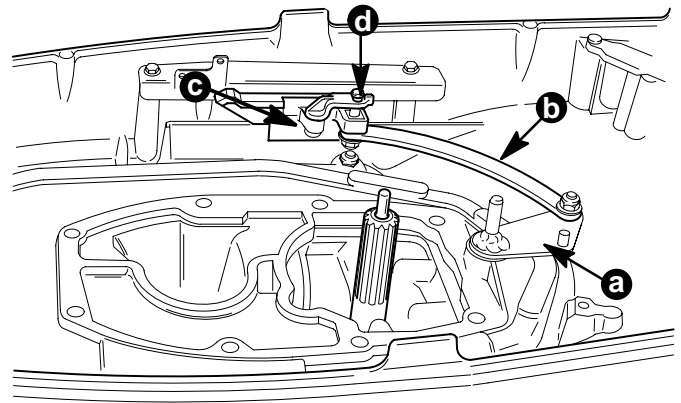
5. Place gearcase shift shaft in neutral position (propeller shaft turns freely in both direction) and install to mid-section. Refer to Section 6A.
6. Install shift lever plate and bushing into mid-section as shown. Shift lever plate must face forward while gearcase is in neutral position.



54742

a - Shift Lever Plate

7. Install shift linkage to bottom cowl as shown.



54634

- a - Shift Lever Plate
- b - Shift Link
- c - Slider
- d - Retainer

8. Install power head (refer to Section 4).